

## General

City: Tiel  
Theatre: Schouwburg&Filmtheater Agnietenhof  
Venue: Rabozaal, kleine zaal  
Visitingaddress: St.Agnietenstraat 2  
Postalcode visitingaddress: 4001 NB Tiel  
Postaladdress: Postbus 560  
Postalcode postaladdress: 4000 AN Tiel

General: 0344-673515  
Ticketing: 0344-673500  
Technical team: 0344-673510

Email address general: [info@agnietenhof.nl](mailto:info@agnietenhof.nl)  
Email adres Technical team: [techniek@agnietenhof.nl](mailto:techniek@agnietenhof.nl)  
Homepage: [www.agnietenhof.nl](http://www.agnietenhof.nl)

Directeur: Dhr. R. van Zuilen  
Publicity/Marketing: Mevr. E. Schoeman  
Technical manager: Dhr. M.J. Gennissen  
Stagemanager: Dhr. J. Pot  
Lunchtime: preferably one hour  
End dayshift: 17:00 uur  
Begin eveningshift: 19:00 uur  
Start show: 20:00 uur  
Theatre open between 17:00 en 19:00 uur: yes

Maximum number of seats: 253 total incl. extra row  
Extra row on venue floor: 19  
Seats reserved for FOH: fixed, all the way in the back

### **SAFETY FOOTWEAR MUST BE WORN AT ALL TIMES.**

### **Loading, unloading and parking facilities**

When necessary a lorry can park in the loading dock of the large venue, when not in use. Otherwise there is a loading dock for vans.

Cars can be parked on the parking space next to the theatre. The theatre does not have parking permits.

### **Dressing rooms**

There are ten dressing rooms available. One is next to the stage, the other nine are one floor up, reachable by lift or stairs. Two of these dressing rooms have their own shower and bathroom. The other seven have shared one-person showers and bathrooms.

There is a room equipped for a washing machine and/or dryer. The theatre does not supply a washing machine or dryer.

### **Green Room**

The green room is available during opening hours, during the day a host is available only on special request. Catering is also not provided unless on special request. Password protected wifi is available throughout the building.

## Dimensions

### Stage

Stage area with legs

Width	10 m
Depth	9 m

Stage area without legs

Width	11,7 m
Depth	9 m
Ceiling height	10 m
Height underneath bridge	6,35m
Max height fly-bars	7,2m

Be aware, the stage is oval shaped in the back.

## Draperies

### **Legs**

Number	6 pcs.
Height	varies
Width	2,5 m
Colour	Nightblue (navy)
Material	Velvet

Scrim/ Gauze black	10.5m x 6m
Scrim/ Gauze grey	10.5m x 6m

### **Backdrop**

Width	11m
Height	7.5m

### **Cyclorama (horizon)**

Width	11m
Height	7.5m

### **Theatrelift**

Brand/type	Alp
Height	9 m
Power supply	230V

## Chain hoists

### Technical data

Above the stage there are 5 fly-bars (ladder truss) hung in 10 chain hoists. The hoists hang from a rail so they can be moved in depth accordingly to the wishes of each show. There is also one fly-bar above the audience.

#### **Fly bars**

Number	6 pcs
Length	11,00 m
Circumference	48 mm
Type	ladder truss
Max. height	7,20 m
Max. load	200 kg
Point load underneath hoist	150 kg
Point load in between hoists	100 kg
Number of hoists per fly-bar	2 pcs

## Light

### Lighting desks

Compulite Spark 4D	Compulite Spark TOP
Remote focussing	Yes

### Dimmers

#### **Fixed dimmers**

Brand / type	ETC / Matrix
Max load	3 Kw
Number	78
Max load	5 Kw
Number	6 cyclorama

See also lighting plan

#### **Mobile**

Number of racks	1
Brand / type	ETC Alex
Max load	2,5 Kw
Dimmers per rack	24
Second one available when not in use in large venue on request	

## 3-phase

Backstage CEE 125 A  
Backstage CEE 32 A

Available when not in use in large venue  
Backstage CEE 125 A

### Mobile spots

We have a second venue which means that not all the spots are available all the time.

Altman Zoom profile 2 Kw	3
Altman Zoom profile 1 Kw	10
Six-bar Par 64 MFL 1 Kw	4
PC 2 Kw Robert Juliat	9
PC 1 Kw several types	8
Four-bar Par 64 MFL 1 KW	6
Par 64 MFL1 Kw single	6
ETC multipar 575w (VNSP, NSP, MFL WFL)	9

### Followspots

Robert Juliat Korrigan 5/9° 1.2Kw HMI	1
Robert Juliat Buxie 10,5/22,5° 0.575MSR	1

### Instruments

Piano's are available on request

Piano	Bechstein	440 Hz
Bechstein concert piano C	Bechstein	440 Hz
Yamaha concert piano C3	Yamaha	440 Hz

## Main P.A.

Brand: Sound Projects  
 Front: 1x L en 1x R SP3, 1x Center SP2 + 2x Sub SP2-15  
 Delay: 1x L en 1 x R SP2  
 Sound system is processed by a Soundweb

### Mixing desk

Brand: Midas  
 Type: Verona 32 channel  
 Type: Venice 160  
 Type: Yamaha QL-1 with 32/24 Dante stagerack

### Monitoren

10 pcs Sound Projects X-act, selfpowered  
 2 pcs Sound projects X-tender, selfpowered

### Intercom:

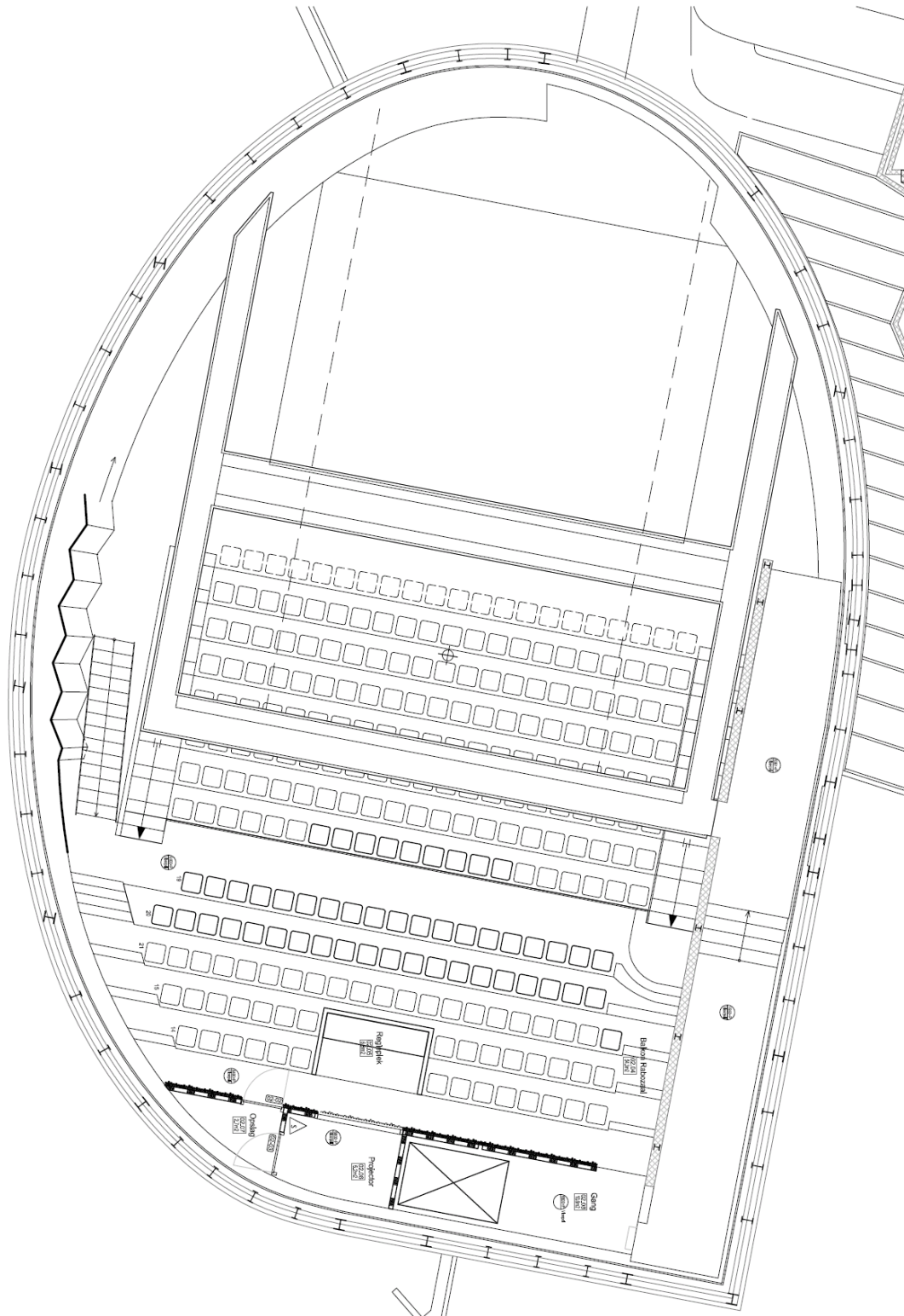
Clearcom Intercom	Maximally 8 positions
Telex Intercom	Wireless

### Microphones / Stands / Cables

On request

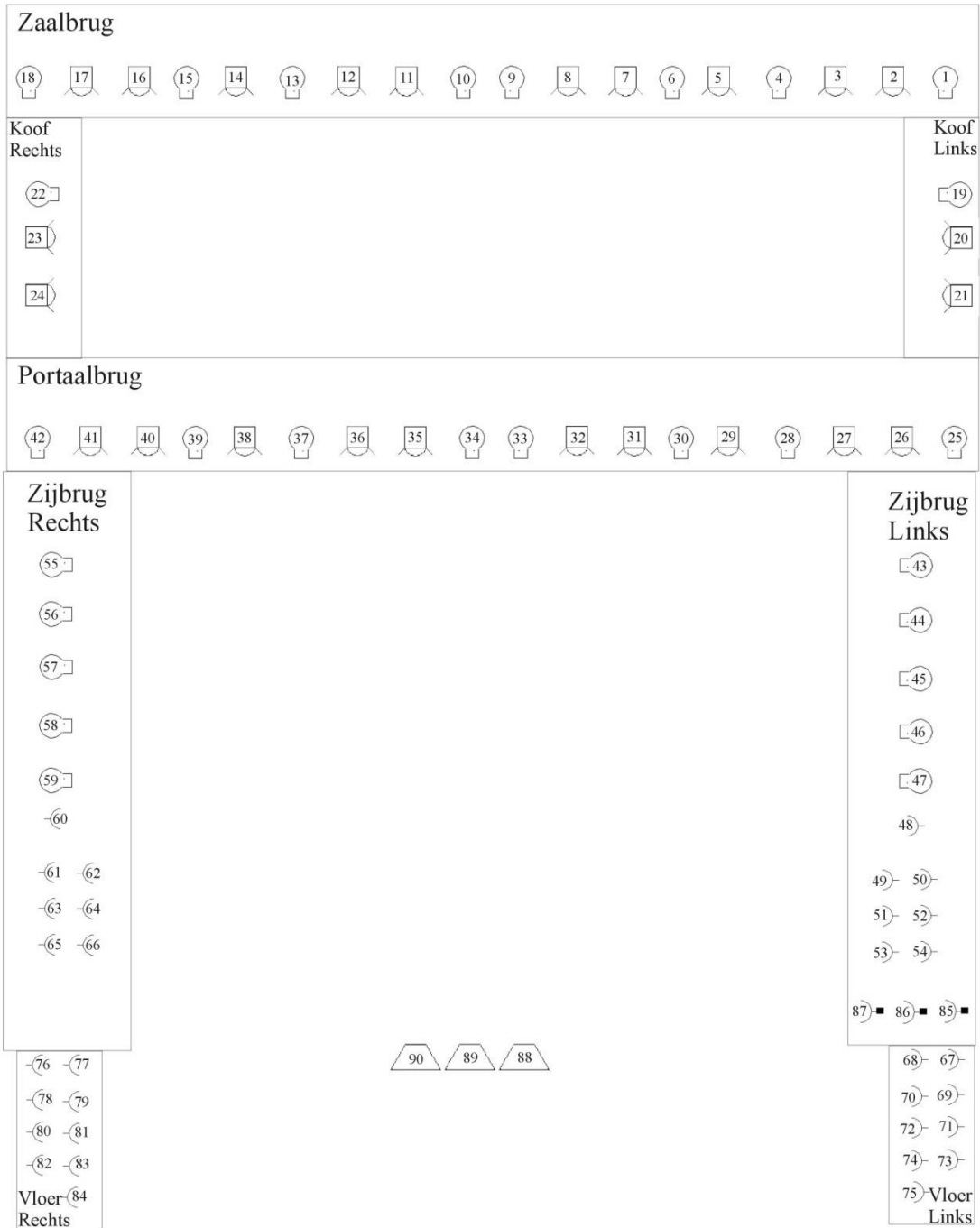
### Video:

Panasonic LCD projector, type PT-EW730ZEJ	1
Stumpfl screen back projection 508 x 325 cm	1
Hitachi Beamer CPX 1250	1
Screen back/front projection 430 x 315	1
Sharp 70-inch led lcd tv with Barco click share	2





**Lichtplan Rabozaal, kleine zaal  
Schouwburg&Filmtheater Agnietenhof**





**WERKBLAD TREKINDELING RABOZAAL**

